

A nighttime photograph of the Betsy Ross Bridge in Philadelphia. The bridge's suspension cables and towers are illuminated with blue lights. In the foreground, a paved walkway runs along the riverbank, flanked by green grass and trees. The Delaware River is visible on the right, reflecting the city lights. The Philadelphia skyline is visible in the background under a dark blue night sky.

Greater Philadelphia Region Precision Medicine Tech Hub

Update
December 2023

Agenda

- **Introductions**
- **Review of EDA Tech Hubs Program**
- **Progress to Date**
- **Next Steps—How you can participate**

Introductions

- **Ben Team**
- **America Achieves**
- **Participants (Name and Org.)**

Funding, sequence and notes

Phase 1 Designation Proposal

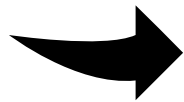
- Submitted 15 August
- Designated 23 October

378 Applications (both programs)

247 Unique Leads

200 Designation Applications

31 Received Designation Status



Designation comes with NO



Designees and Strategy Development Grant Recipients



Benefits of Hub Designation Include:



Connections with the Small Business Innovation Research (SBIR) ecosystem



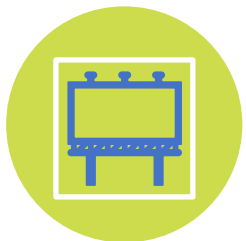
Preference for EDA's Build to Scale program



EDA will give higher priority to distressed communities within Tech Hubs regions



Dedicated presence at the SelectUSA Investment Summit Exhibition Hall in June 2024



The U.S. Patent and Trademark Office (USPTO) will identify a Tech Hubs Ambassador and highlight at regional USPTO events



USPTO will provide strategic guidance and technical assistance on IP

Key Elements

Phase 2 Implementation Grant

- **NOW ELIGIBLE TO COMPETE**
- Funding opportunity released 23 OCTOBER 2023
 - **Due Date: 29 FEB 2024**
 - Budget of up to \$75M/5 years*
 - Requires 10% match
 - 5-10 of the 31 Hubs are expected to be approved



***\$500M has been appropriated. EDA expects average award is \$45M if 10 Hubs approved.**

Key Elements

➤ From the NOFO:

“All projects funded should increase the speed and effectiveness with which industry and other organizations transition technologies upward from Field Testing through Full deployment.”

→ Think Phase 0/I clinical trials through Keytruda.

→ Think transformative, not incremental

→ EDA funding as “force multiplier”

➤ Consideration will be given to technologies that are in the “AAA” or even “AA” Club.

Context: The Health-Related Designated Regions

	Designee	State(s)	Lead
Advancing Biotech: Precision and Prediction	GPR Precision Med	PA-DE-NJ	BFTP/SEP
	Baltimore Tech Hub	MD	Greater Baltimore Committee
	Birmingham Biotech Hub	AL	SRI
	Minnesota MedTech	MN	Minn/St. P ED partnership
	Wisconsin Biohealth Tech	WI	BioForward Wisconsin
Advancing Biotechnology: Drugs and Devices	Advanced Pharmaceutical Manufacturing Tech Hub	VA	Commonwealth Center for Advanced Manufacturing
	ReGen Valley Tech Hub (NH)	NH	Advanced regen. Manufacturing Institute
	iFAB Tech Hub	IL	U Illinois-Urbana-Champaign
	KC Inclusive Biologics and Bioman Tech Hub	KS/MO	BioNexus KC
	Heartland BioWorks	IN	Applied Research Institute
	PRBio Tech Hub	PR	PR Science, Tech and Research Trust

EDA's Evaluation Criteria for Implementation

Criteria	Weight
Project Quality, ability to execute, and private sector integration	16 points
Impact on economic and national security	16 points
Investment and policy commitments	16 points
Developing, recruiting and retaining talent and workforce	8 points
Capital formation, deployment, and access	8 points
Equity and diversity	8 points
Governance, leadership and evaluation	8 points

Why Greater Philly, Why Now?

Greater Philadelphia Region Precision Medicine Tech Hub

(GPRPMTH)!

The Greater Philadelphia Region



Precision Medicine Tech Hub—Mission and Vision

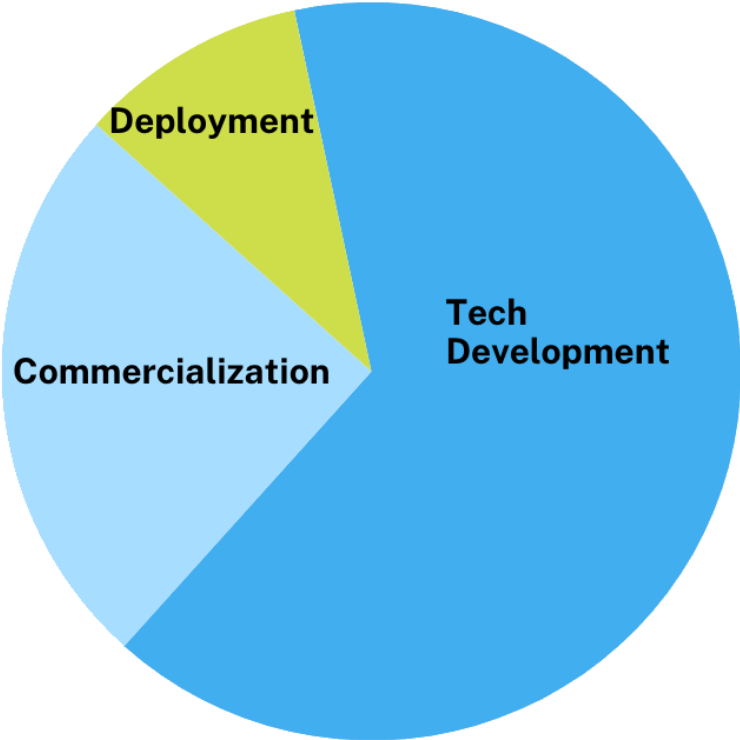
End-to-End Precision Medicine:

- From first concept to final product, Hubs must support *innovation in and integration of* technology, economic development strategies, policy, entrepreneurship, and workforce development. The integration of the region's significant assets leads directly to global competitiveness *of the region* with equitable delivery of these new products, tools and interventions *to the region* and collectively contributes to economic and national security. End-to-End Precision Medicine.

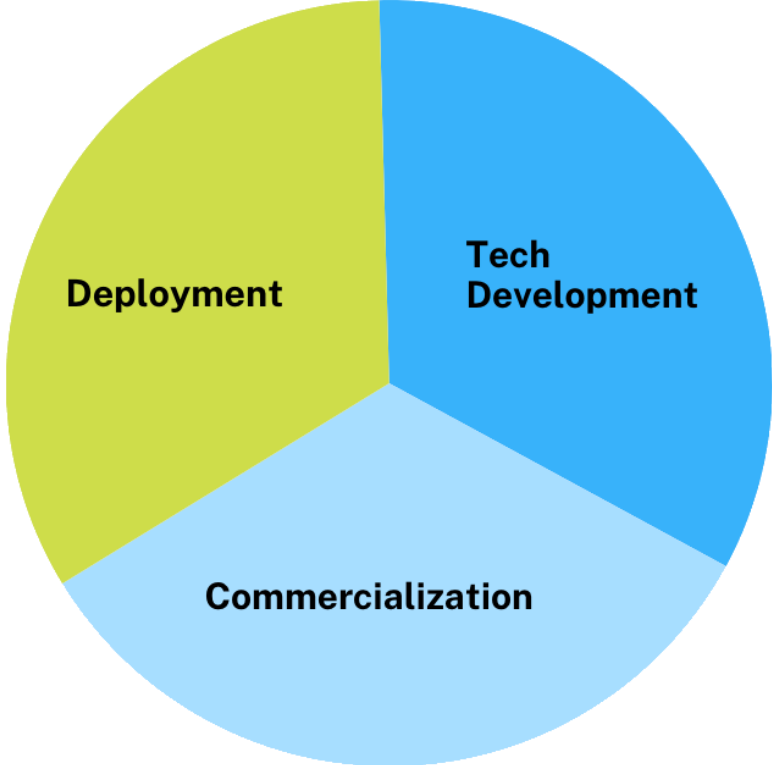
- **Weigh in with your ideas** ([Jamboard](#))



Current State vs Goal



Current State: Imbalanced



Goal: Balanced

Precision Medicine Tech Hub—Examples



Plug-and-Play
vaccine
platforms



CRISPR-based
gene therapies
that eliminate
need for viral
vectors



“Modular
Manufacturing”



AI-based
screening for
biopharmaceutical
drug development



“Off-the-shelf”
Allogenic cell
lines for cell
therapy

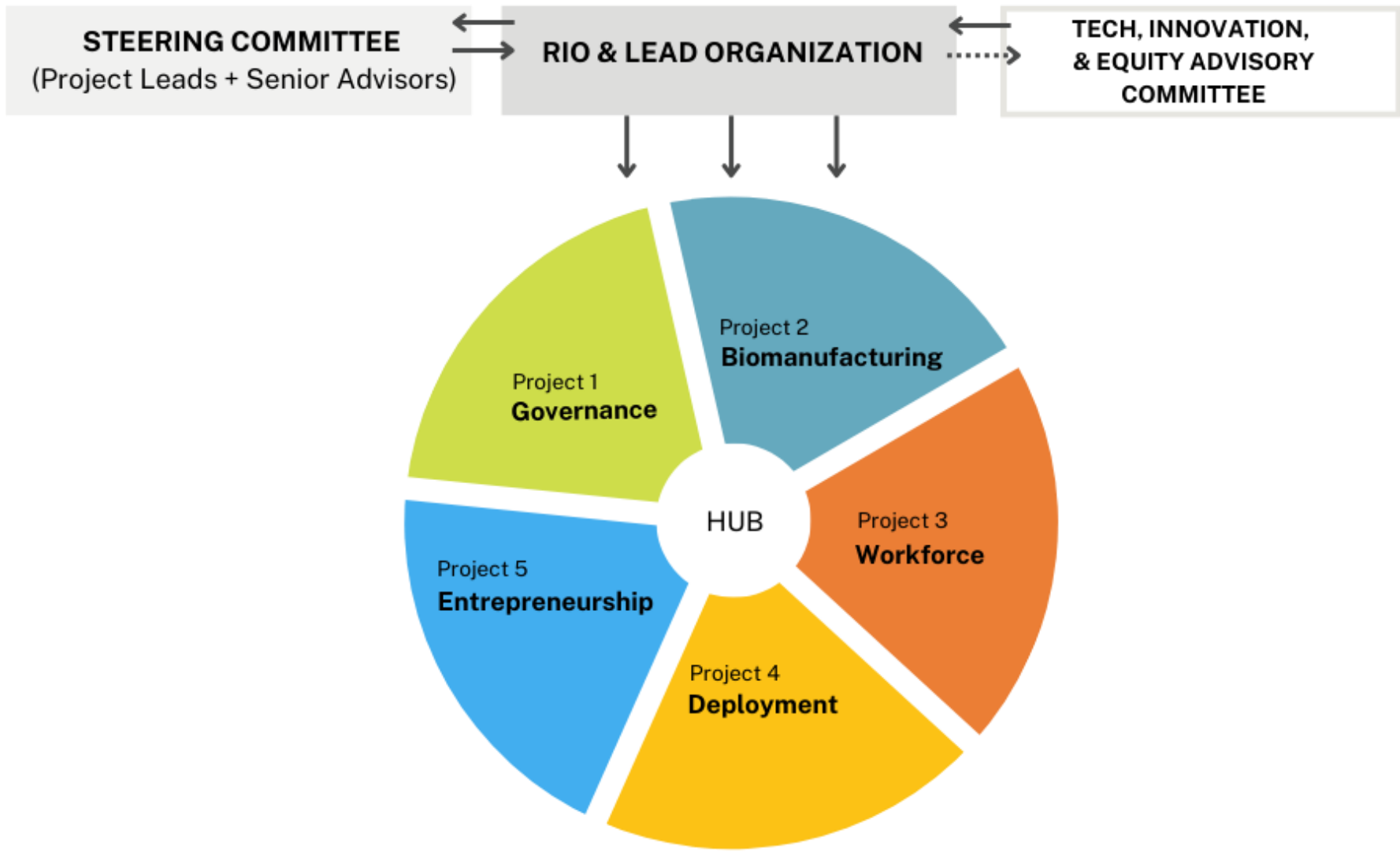


Clinical trial
networks to
speed the
recruitment of
relevant and
diverse test
populations



Increased efficiency
of digital
health/telemedicine,
community healthcare
delivery

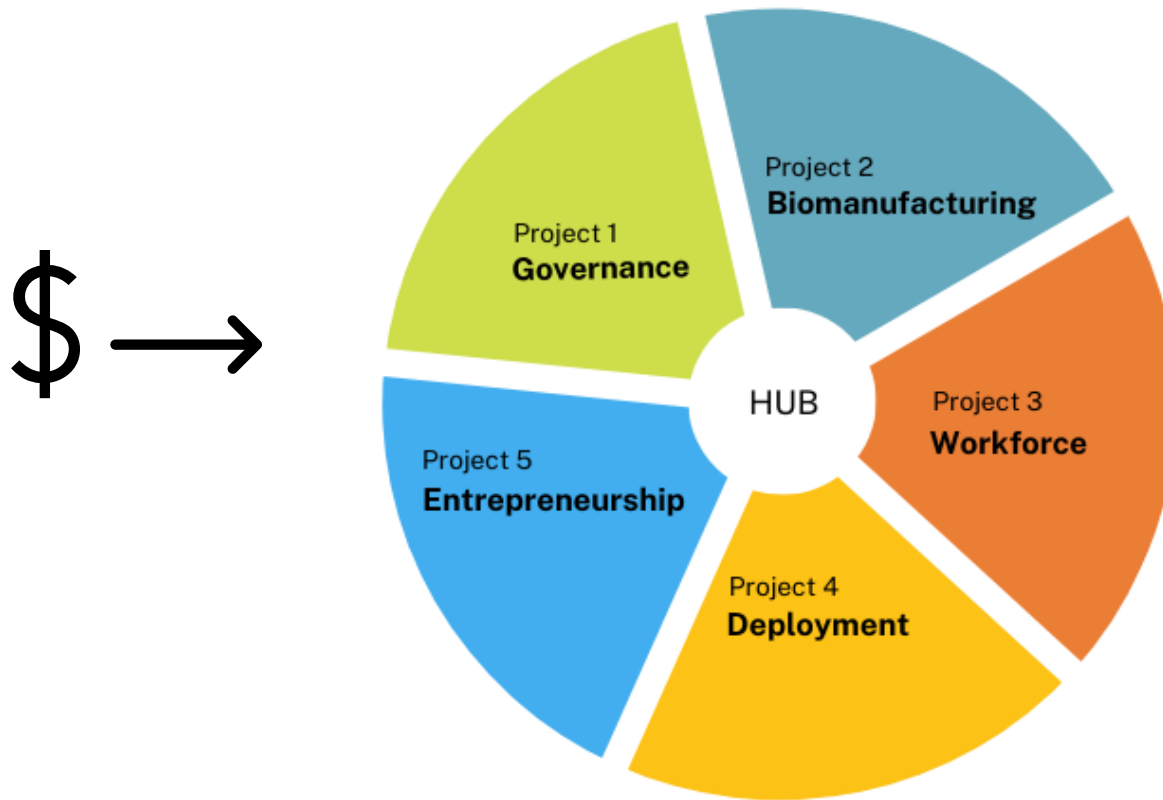
Draft Organizational Structure



Draft Organizational Structure

Each Project will have sub-projects that are directed to specific product type or end user. Examples:

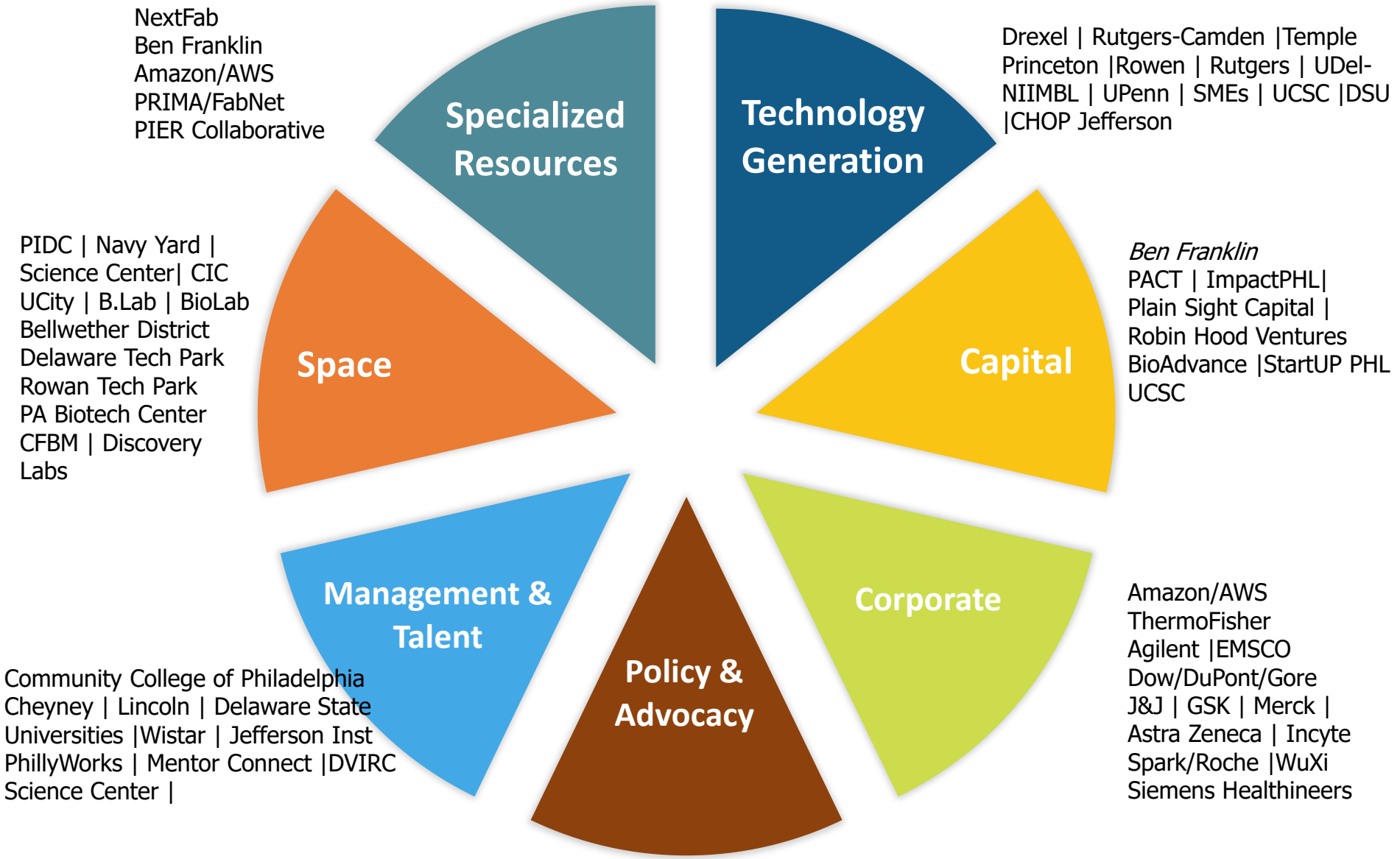
- Biomanufacturing as applied to C> vs Vaccines; Modular Manufacturing
- Workforce as applied to biotech vs AI/Software vs public health
- Deployment as applied to therapeutics vs vaccines vs home healthcare



Draft Project Plan

Component	Lead	Goal
Lead Organization Regional Innovation Officer (RIO)	BFTP	Create Vision, Architecture, governance, management/project integration plan and validation methods to assure completion of goals, pathway to increased economic and national security, assure global competitiveness and sustainability after funding period. The "Parent" Hub.
Project 1: Governance	BFTP	Modifies and executes governing, oversight, operating, communication, evaluation policies; Establishes "go/no go" policies; membership. Advisory committee creation to assure "real time"
Project 2: Biomanufacturing	UDel/ NIIMBL	Increase efficiency of biomanufacturing through new processes, new technologies resulting in reduction in costs; Assure fully trained workforce.
Project 3: Workforce	PhillyWorks	Expand programs to create and sustain next gen technically competent workforce.
Project 4: Deployment	Virtua/ Healthshare Exchange/ Co-lead TBD	Increased health equity and health security through targeted programs for increased access and deployment of new interventions; address issues related to vaccine hesitancy and mistrust. Develop and execute meaningful data policies.
Project 5: Entrepreneurship	BFTP-HIG/ co-Lead TBD	Increase efficiency for commercialization of new technologies through specialized support programs ranging from technical/manufacturing challenges to mentoring of company management teams for growth.

Components, Inaugural Partners and anticipated funded partners



Government: City of Philadelphia | Commonwealth of Pennsylvania | DPP | Del
Innovation | NJEDA | County EDCs (PIDC, Bucks, Chester, Del, Mont)
Other: Technical.ly | Life Sciences PA | NJ Bio | Del Bio

Progress-to-Date



- ✓ Engaged America Achieves as consultant
 - ✓ Drafted High Level Project Management Tool
 - ✓ Drafted Communication Plan
 - ✓ Created Project Lead Submission Package

- ✓ Completing draft of Governance document, Hub organization, management and committees

- ✓ Identified Projects and Leads; Identification of co-Leads in progress
 - ✓ Governance
 - ✓ Biomanufacturing
 - ✓ Workforce
 - ✓ Deployment
 - ✓ Entrepreneurship

- ✓ Continuous engagement with EDA to assure compliance with their priorities.

Next Steps

- Survey on capabilities and contribution to Hub
- Develop appropriate sub-governance documents
 - Operating
 - MOUs
 - Confidentiality
- Identify gaps and missing organizations ([Jamboard 2](#))
- Confirm Project elements and assure integration among all four projects
- Solidify non-Ben/non-Project lead Steering Committee members
- Identify and secure commitments from industry and private sector
- Identify and secure Technology, Innovation and Equity Advisory Committee members
- Provide all relevant templates, docs and forms for completion as directed by EDA



How to Engage



FUNDED
THROUGH
A
SPECIFIC
PROJECT



RESPOND
TO A
PROJECT
RFP



JOIN AN
ADVISORY
COMMITTEE



BRING
YOUR
IDEAS TO
THE HUB



CONNECT
TO OTHER
REGIONAL
PROGRAMS



RESPOND TO OUR SURVEY



SUPPORT HUB SUCCESS TO ENSURE
SUSTAINABILITY

Thank You